



# PRINCE Dr. K. VASUDEVAN COLLEGE OF ENGINEERING AND TECHNOLOGY

(Approved by AICTE, Affiliated to Anna University & ISO 9001:2015 Certified Institution)  
Medavakkam-Mambakkam Main Road, Ponmar, Chennai-600127

## FACULTY FEEDBACK ON SYLLABUS – ANALYSIS REPORT

Academic Year

2019-20

Department

Computer Science and Engineering

Number of Respondents

7

Rate the curriculum / syllabus on the following points

S. No	Feedback on Syllabus	Strongly agree	Agree	Neutral	Disagree	Strongly Disagree
		5	4	3	2	1
1	Is the course objective are illustrated clearly to the need of the students?	6	1	0	0	0
2	Are you satisfied with the existing syllabus which you are handling?	5	1	1	0	0
3	Is the syllabus designed based on average student level?	6	1	0	0	0
4	Is the syllabus providing the basic knowledge to carry out the field project/Internship?	5	1	1	0	0
5	Is the curriculum designed by university is more relevant to the department background?	6	1	0	0	0
6	Is the syllabus well organized and easy to follow by the students?	6	1	0	0	0
7	Is the syllabus covered fundamentals, advanced topics and ensures balance between theory & Applications	7	0	0	0	0

*N. B. Srinivasan*

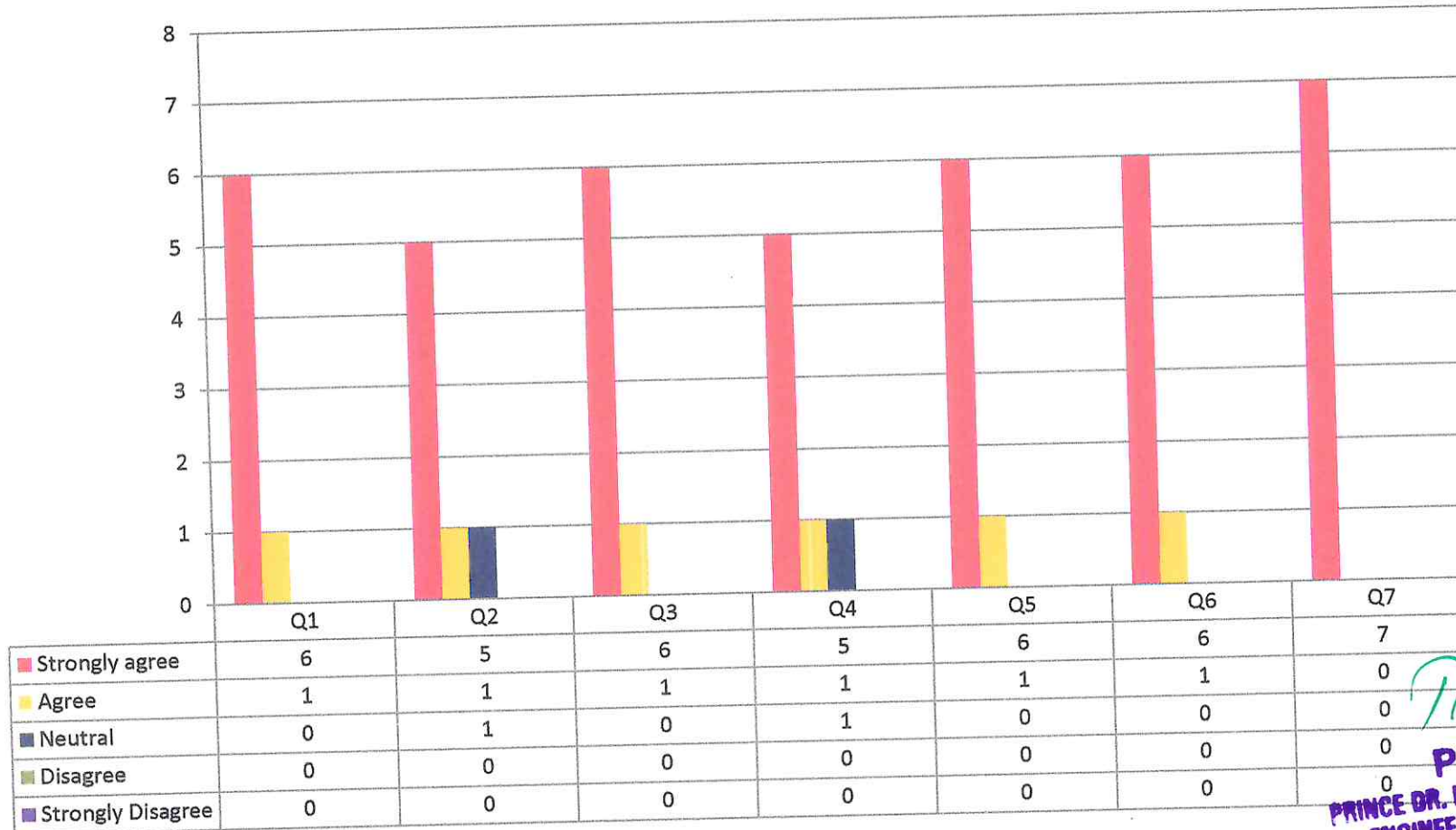
**PRINCIPAL**  
**PRINCE DR. K. VASUDEVAN COLLEGE OF**  
**ENGINEERING AND TECHNOLOGY**  
**PONMAR, CHENNAI-600 127.**



# PRINCE Dr. K. VASUDEVAN COLLEGE OF ENGINEERING AND TECHNOLOGY

(Approved by AICTE, Affiliated to Anna University & ISO 9001:2015 Certified Institution)  
Medavakkam-Mambakkam Main Road, Ponmar, Chennai-600127

## FACULTY FEEDBACK ON SYLLABUS - 2019-2020 Computer Science and Engineering (NUMBER OF RESPONDENTS - 7)



*[Signature]*  
**PRINCIPAL**  
PRINCE DR. K. VASUDEVAN COLLEGE  
ENGINEERING AND TECHNOLOGY  
POMMAR, CHENNAI-600127.



# PRINCE Dr. K. VASUDEVAN COLLEGE OF ENGINEERING AND TECHNOLOGY

(Approved by AICTE, Affiliated to Anna University & ISO 9001:2015 Certified Institution)  
Medavakkam-Mambakkam Main Road, Ponmar, Chennai-600127

## FACULTY FEEDBACK ON SYLLABUS – ANALYSIS REPORT

Academic Year

2019-20

Department

Electronics and Communication Engineering

Number of Respondents

6

Rate the curriculum / syllabus on the following points

S. No	Feedback on Syllabus	Strongly agree	Agree	Neutral	Disagree	Strongly Disagree
		5	4	3	2	1
1	Is the course objective are illustrated clearly to the need of the students?	5	1	0	0	0
2	Are you satisfied with the existing syllabus which you are handling?	4	1	1	0	0
3	Is the syllabus designed based on average student level?	4	2	0	0	0
4	Is the syllabus providing the basic knowledge to carry out the field project/Internship?	5	1	0	0	0
5	Is the curriculum designed by university is more relevant to the department background?	5	0	1	0	0
6	Is the syllabus well organized and easy to follow by the students?	4	2	0	0	0
7	Is the syllabus covered fundamentals, advanced topics and ensures balance between theory & Applications	5	0	1	0	0

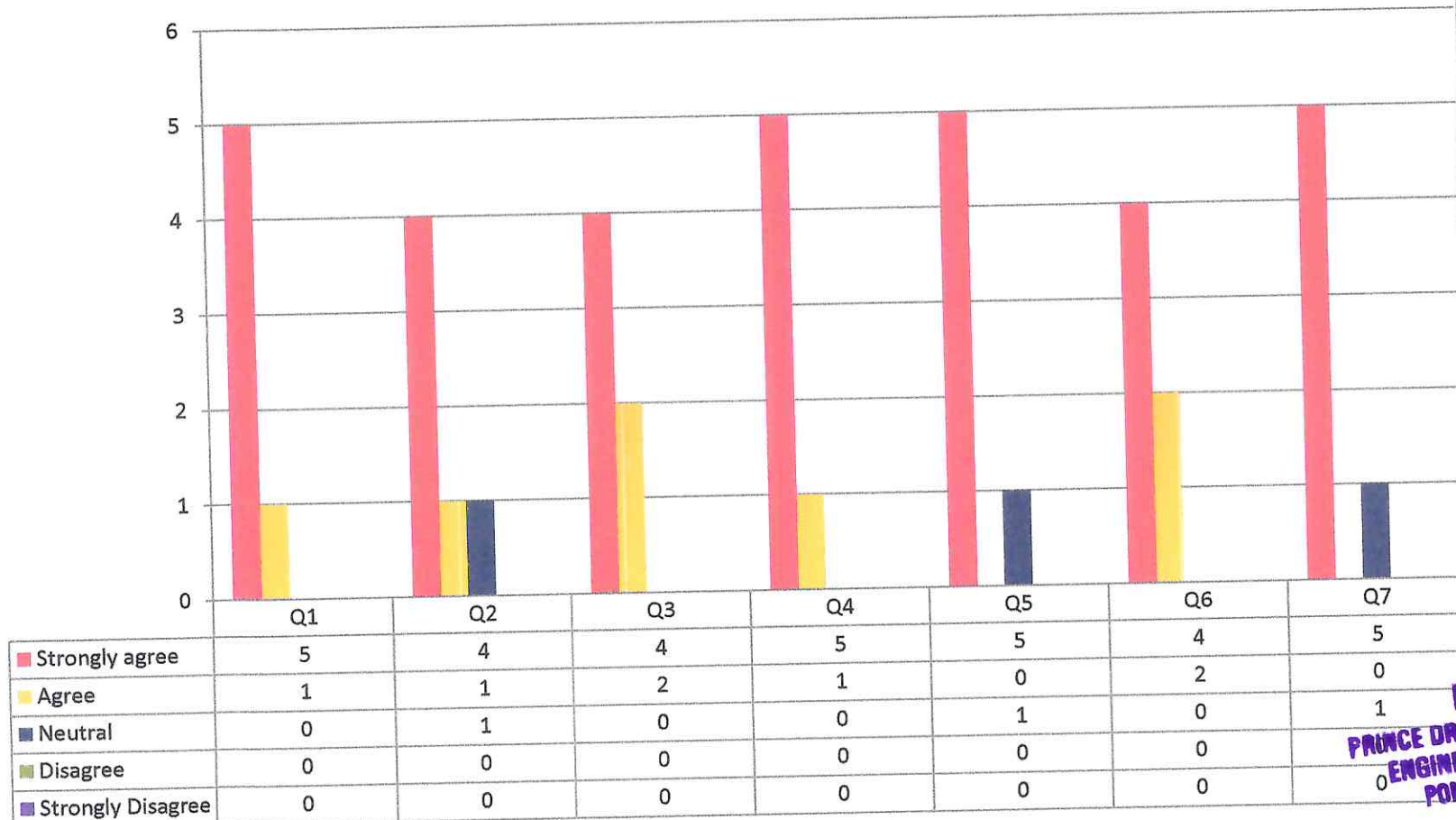
**PRINCIPAL**  
**PRINCE DR. K. VASUDEVAN COLLEGE OF**  
**ENGINEERING AND TECHNOLOGY**  
**PONMAR, CHENNAI-600 127.**



# PRINCE Dr. K. VASUDEVAN COLLEGE OF ENGINEERING AND TECHNOLOGY

(Approved by AICTE, Affiliated to Anna University & ISO 9001:2015 Certified Institution)  
Medavakkam-Mambakkam Main Road, Ponmar, Chennai-600127

## FACULTY FEEDBACK ON SYLLABUS - 2019-2020 Electronics and Communication Engineering (NUMBER OF RESPONDENTS - 6)



*[Signature]*  
**PRINCIPAL**  
PRINCE DR. K. VASUDEVAN COLLEGE  
ENGINEERING AND TECHNOLOGY  
PONMAR, CHENNAI-600 127.



# PRINCE Dr. K. VASUDEVAN COLLEGE OF ENGINEERING AND TECHNOLOGY

(Approved by AICTE, Affiliated to Anna University & ISO 9001:2015 Certified Institution)  
Medavakkam-Mambakkam Main Road, Ponmar, Chennai-600127

## FACULTY FEEDBACK ON SYLLABUS – ANALYSIS REPORT

Academic Year

2019-20

Department

Electrical and Electronics Engineering

Number of Respondents

3

Rate the curriculum / syllabus on the following points

S. No	Feedback on Syllabus	Strongly agree	Agree	Neutral	Disagree	Strongly Disagree
		5	4	3	2	1
1	Is the course objective are illustrated clearly to the need of the students?	2	1	0	0	0
2	Are you satisfied with the existing syllabus which you are handling?	3	0	0	0	0
3	Is the syllabus designed based on average student level?	2	1	0	0	0
4	Is the syllabus providing the basic knowledge to carry out the field project/Internship?	3	0	0	0	0
5	Is the curriculum designed by university is more relevant to the department background?	1	1	1	0	0
6	Is the syllabus well organized and easy to follow by the students?	2	1	0	0	0
7	Is the syllabus covered fundamentals, advanced topics and ensures balance between theory & Applications	2	1	0	0	0

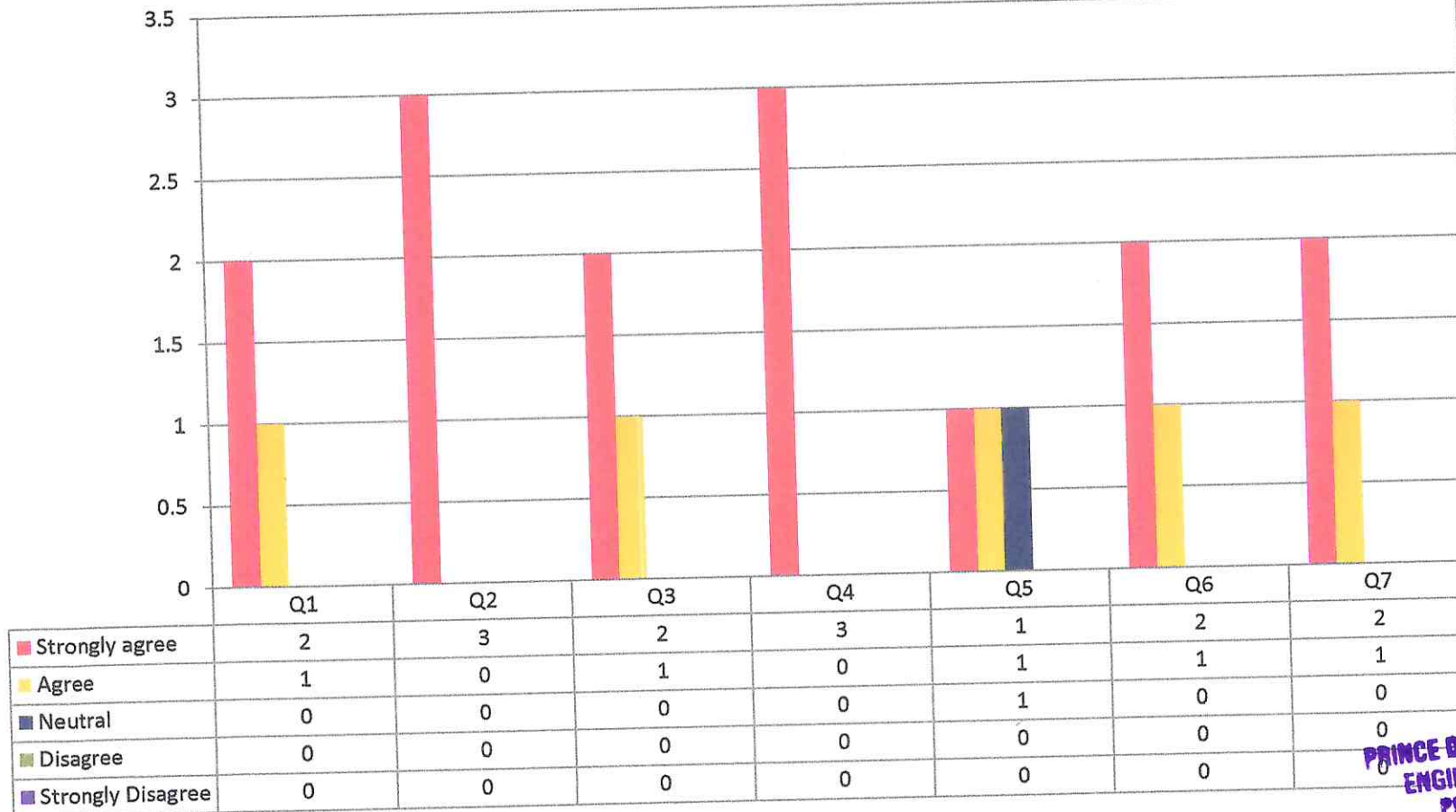
**PRINCIPAL**  
**PRINCE DR. K. VASUDEVAN COLLEGE OF**  
**ENGINEERING AND TECHNOLOGY**  
**PONMAR, CHENNAI-600 127,**



# PRINCE Dr. K. VASUDEVAN COLLEGE OF ENGINEERING AND TECHNOLOGY

(Approved by AICTE, Affiliated to Anna University & ISO 9001:2015 Certified Institution)  
Medavakkam-Mambakkam Main Road, Ponmar, Chennai-600127

## FACULTY FEEDBACK ON SYLLABUS - 2019-2020 Electrical and Electronics Engineering (NUMBER OF RESPONDENTS - 3)



*(Handwritten signature)*

**PRINCIPAL**  
PRINCE DR. K. VASUDEVAN COLLEGE OF  
ENGINEERING AND TECHNOLOGY  
PONMAR, CHENNAI-600 127.



# PRINCE Dr. K. VASUDEVAN COLLEGE OF ENGINEERING AND TECHNOLOGY

(Approved by AICTE, Affiliated to Anna University & ISO 9001:2015 Certified Institution)  
Medavakkam-Mambakkam Main Road, Ponmar, Chennai-600127

## FACULTY FEEDBACK ON SYLLABUS – ANALYSIS REPORT

Academic Year

2019-20

Department

Mechanical Engineering

Number of Respondents

3

Rate the curriculum / syllabus on the following points

S. No	Feedback on Syllabus	Strongly agree	Agree	Neutral	Disagree	Strongly Disagree
		5	4	3	2	1
1	Is the course objective are illustrated clearly to the need of the students?	3	0	0	0	0
2	Are you satisfied with the existing syllabus which you are handling?	2	1	0	0	0
3	Is the syllabus designed based on average student level?	1	1	1	0	0
4	Is the syllabus providing the basic knowledge to carry out the field project/Internship?	3	0	0	0	0
5	Is the curriculum designed by university is more relevant to the department background?	2	1	0	0	0
6	Is the syllabus well organized and easy to follow by the students?	2	1	0	0	0
7	Is the syllabus covered fundamentals, advanced topics and ensures balance between theory & Applications	2	1	0	0	0

  
**PRINCIPAL**  
**PRINCE DR. K. VASUDEVAN COLLEGE OF**  
**ENGINEERING AND TECHNOLOGY**  
**PONMAR, CHENNAI-600127**

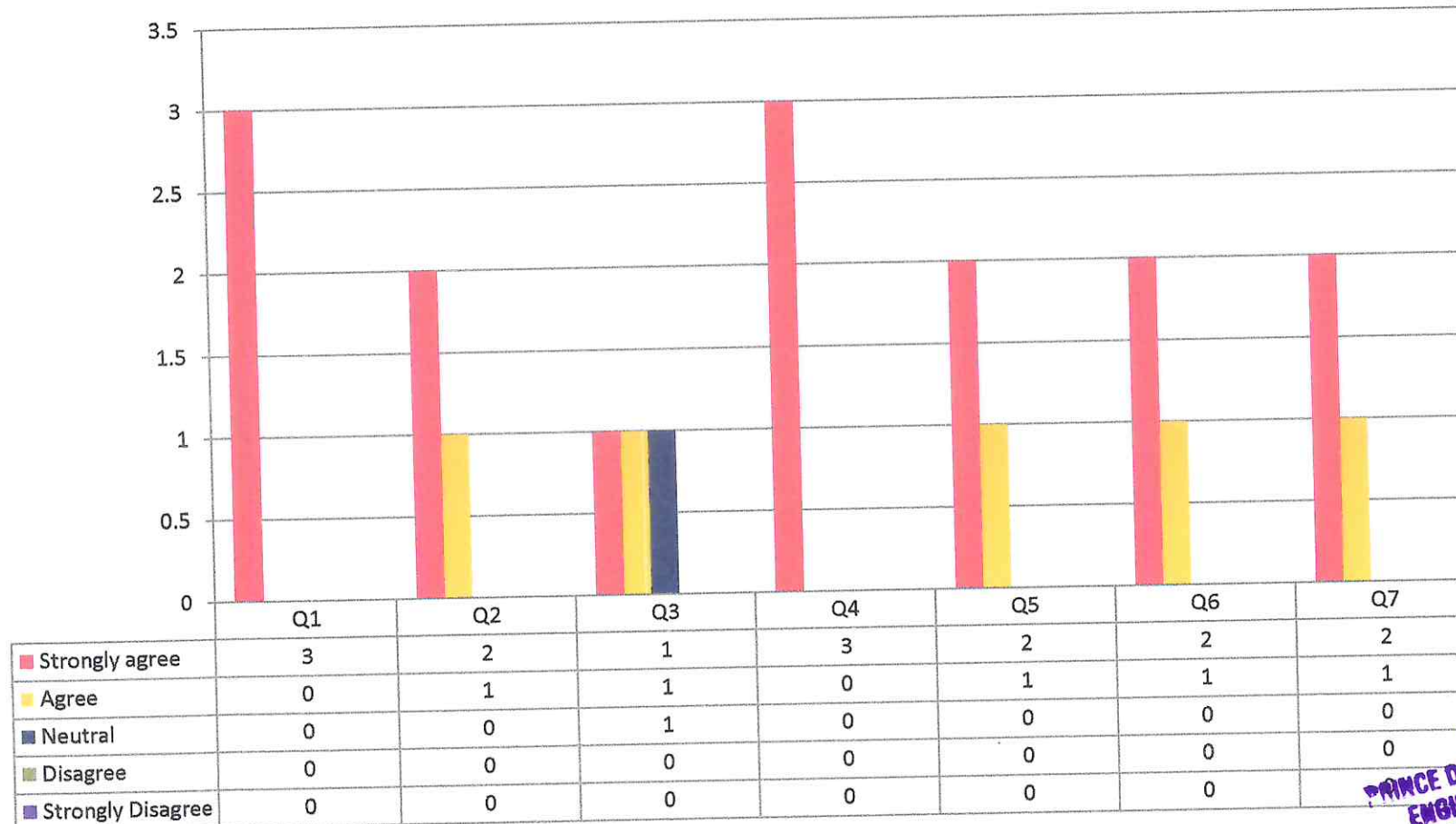


# PRINCE Dr. K. VASUDEVAN COLLEGE OF ENGINEERING AND TECHNOLOGY

(Approved by AICTE, Affiliated to Anna University & ISO 9001:2015 Certified Institution)  
Medavakkam-Mambakkam Main Road, Ponmar, Chennai-600127

## FACULTY FEEDBACK ON SYLLABUS - 2019-2020

### Mechanical Engineering (NUMBER OF RESPONDENTS - 3)



*D. S. S.*  
**PRINCE DR. K. VASUDEVAN COLLEGE OF ENGINEERING AND TECHNOLOGY**  
POMMAR, CHENNAI-600 127.





# PRINCE Dr. K. VASUDEVAN COLLEGE OF ENGINEERING AND TECHNOLOGY

(Approved by AICTE, Affiliated to Anna University & ISO 9001:2015 Certified Institution)  
Medavakkam-Mambakkam Main Road, Ponmar, Chennai-600127

## FACULTY FEEDBACK ON SYLLABUS – ANALYSIS REPORT

Academic Year

2019-20

Department

Science and Humanities

Number of Respondents

4

Rate the curriculum / syllabus on the following points

S. No	Feedback on Syllabus	Strongly agree	Agree	Neutral	Disagree	Strongly Disagree
		5	4	3	2	1
1	Is the course objective are illustrated clearly to the need of the students?	4	0	0	0	0
2	Are you satisfied with the existing syllabus which you are handling?	2	1	1	0	0
3	Is the syllabus designed based on average student level?	3	1	0	0	0
4	Is the syllabus providing the basic knowledge to carry out the field project/Internship?	3	1	0	0	0
5	Is the curriculum designed by university is more relevant to the department background?	1	1	1	1	0
6	Is the syllabus well organized and easy to follow by the students?	2	2	0	0	0
7	Is the syllabus covered fundamentals, advanced topics and ensures balance between theory & Applications	3	1	0	0	0

PRINCIPAL  
PRINCE DR. K. VASUDEVAN COLLEGE OF  
ENGINEERING AND TECHNOLOGY

Medavakkam-Mambakkam Main Road, Ponmar, Chennai-600127.



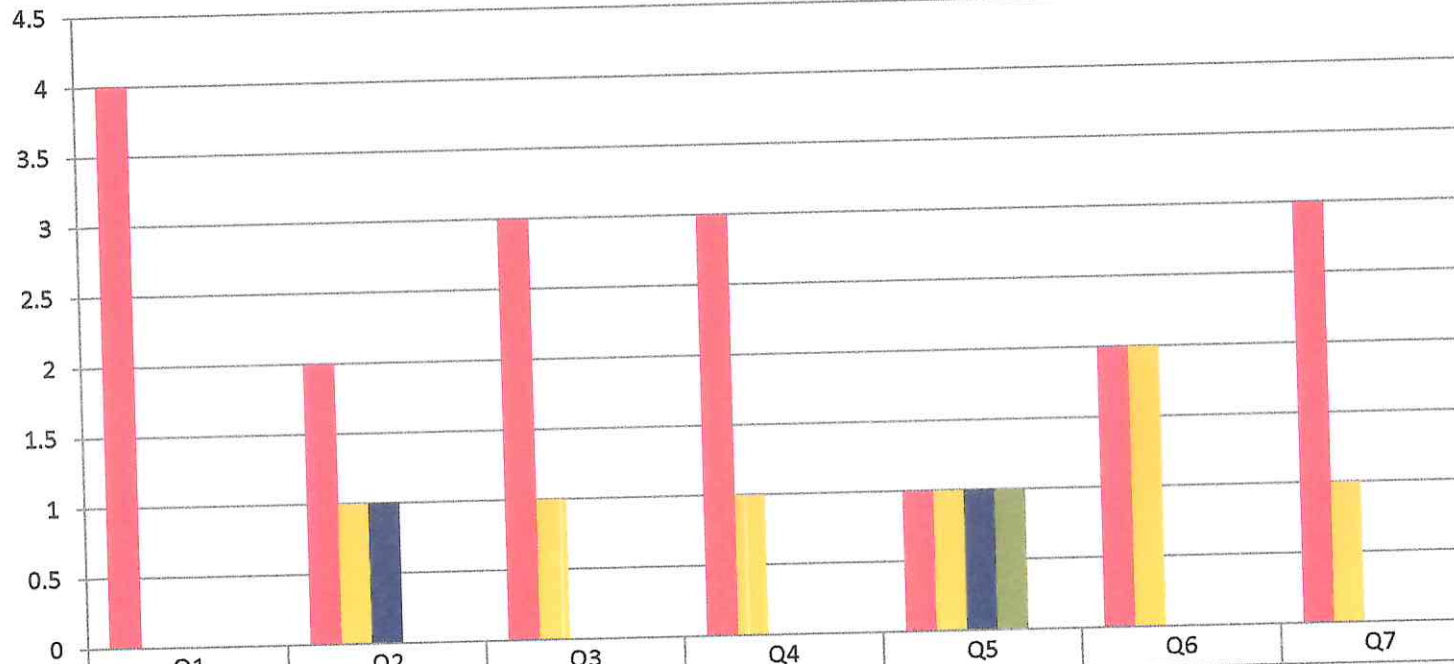
# PRINCE Dr. K.VASUDEVAN COLLEGE OF ENGINEERING AND TECHNOLOGY

(Approved by AICTE, Affiliated to Anna University & ISO 9001:2015 Certified Institution)  
Medavakkam-Mambakkam Main Road, Ponmar, Chennai-600127

## FACULTY FEEDBACK ON SYLLABUS - 2019-2020

### Science and Humanities

(NUMBER OF RESPONDENTS - 04)



Strongly agree  
Agree  
Neutral  
Disagree  
Strongly Disagree

Q1 Q2 Q3 Q4 Q5 Q6 Q7

4	2	3	3	1	2	3
0	1	1	1	1	0	0
0	1	0	0	1	0	0
0	0	0	0	1	0	0
0	0	0	0	0	0	0

*(Signature)*

**PRINCIPAL**  
PRINCE DR. K. VASUDEVAN COLLEGE  
ENGINEERING AND TECHNOLOGY  
PONMAR, CHENNAI-600 127.